

Riverland

ROUND ROUND ROUND ROUND ROUND
 1 2 3 1 2 3 1 2 3 1 2 3 1 2 3

0-10 plastics Clean Waters, Thriving Nature The river is clear, fish return, and birds nest along the banks. Children play safely in the water.	11-20 plastics First Signs Occasionally, plastic gets caught in plants. Kayakers spot bottles floating by.	21-30 plastics Nature Under Pressure Waterbirds get tangled in plastic rings. Swans nest among wrappers. Biodiversity declines.	31-40 plastics Toxic Waters Microplastics are found in fish and mussels. Local restaurants worry about the catch.	41-50 plastics Danger Zone Dead fish float in the river. Swimming areas are closed due to health risks.	50+ plastics River in Collapse The river mouth is clogged, ecosystems collapse. Cleanup costs rise, residents demand action.
---	--	---	---	---	--



KPI

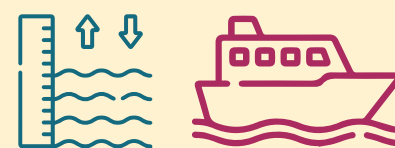
😊	1	2	3	4	5	6	7	8	9	10	11	12	13	14	15
💧	1	2	3	4	5	6	7	8	9	10	11	12	13	14	15
🚢	1	2	3	4	5	6	7	8	9	10	11	12	13	14	15
🏠	1	2	3	4	5	6	7	8	9	10	11	12	13	14	15

Prevention tracker


-1 -2 -4 -6 -8

RIVERMASTER

As River Master, you manage the main waterways of Riverlands. You are responsible for safe ship navigation and for ensuring balanced water levels to prevent flooding and maintain water supply. You keep the major rivers safe for everyone.



You win if the KPIs for Shipping Access and Water Level are as high as possible.

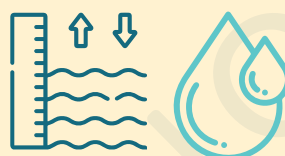
Per round:  +1

SPECIAL:

When drawing research cards, you may draw 4 and keep 2.

WATER WARDEN

As Water Warden, you are responsible for water quality. You manage wastewater treatment plants and the lock system of Riverlands. You ensure clean water and stable water levels in the smaller waterways of the region.



You win if the KPIs for Water Quality and Water Level are as high as possible.

Per round:  +1  -1

SPECIAL:


You may remove 1 plastic from your waters each turn.

CITY PIONEER

As City Pioneers, you look after the citizens of Riverlands. You manage the lively village of Cirkeldam, a beautiful town with big city ambitions and iconic canals. Your goal is to keep the canals clean enough for swimming.



You win if the KPIs for Citizen Satisfaction and Water Quality are as high as possible.

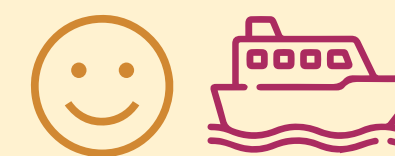
Per round:  +1

SPECIAL:


When drawing prevention cards, you may immediately draw 2 instead of 1.

REGION EXPLORER

As Region Explorer, you strive to make this area one of the best in the country. You ensure people can live and work here with joy and economic prosperity. Shipping Access is critical to the region, and you safeguard it.



You win if the KPIs for Shipping Access and Citizen Satisfaction are as high as possible.

Per round:  +2

SPECIAL:

You manage a larger budget, so you earn +2 coins per round.

Cost

Per round

KPI

Catching system small

Catching system large

Residential area

Marina

Industrial port

Pumping station

Dike reinforcement

Lock

Recreational area

Extra bridge

WWTP

River diversion

Underwater dam



**Catching System
Small**

Remove 1 plastic
per round



**Catching System
Large**

Remove 2 plastic
per round



**Residential
Area**

Gain 1 coin per
round and +1 plastic
enters water per
round



Marina

Gain 1 coin per
round and +2
plastic enters water
per round



**Industrial
Harbor**

Gain 2 coins per
round and +2
plastic enters water
per round



**Pumping
Station**

+1 plastic enters
water per round



**Dike
Reinforcement**

No effect

Lock

Gain 1 coin per
round and +1 plastic
enters water per
round



**Recreational
Area**

+1 plastic enters
water per round



Extra Bridge

Gain 1 coin per
round and +1 plastic
enters water per
round



**Wastewater
Treatment Plant
(WWTP)**

Gain 1 coin per
round



**River
Diversion**

No effect

**Underwater
Dam**

No effect

SCENARIO

Plastic from upstream neighbors

Large amounts of plastic are flowing in from neighboring countries. Unfortunately, you have no control over this.

EFFECT

Plastic +3 at all inflow locations of other rivers.

SCENARIO

Tires cause excessive microplastics

Roadside water bodies receive microplastics due to tire wear.

EFFECT

Plastic +1 at (all) waterways adjacent to roads.

SCENARIO

Major marathon event

The annual Freewaterland marathon takes place, crossing both rural and urban areas.

EFFECT

Plastic +1 along the route of the marathon.



SCENARIO

Cargo ship accident

A ship accidentally dumps plastic cargo into the water.

EFFECT

Plastic +3 at all water areas adjacent to industrial ports.

SCENARIO

Plastic monitoring uncertainty

Improved monitoring techniques reveal that much more plastic passes through the system than previously estimated. The actual plastic levels are significantly higher.

EFFECT

Everywhere there is plastic: add +1 extra plastic.

SCENARIO

Reed cutting operation

Reeds are cut to improve navigation, but this also releases large amounts of microplastic.

EFFECT

Plastic +1 in all green and red areas.

SCENARIO

Heavy rainfall

Due to heavy rainfall, the pumping station is activated and water is diverted quickly.

EFFECT

Plastic flows through the pumping station and all plastic moves 2 steps downstream.

ACTION

Floating debris screen at bridge



ACTION

School education campaign



ACTION

Temporary closure of recreation area



ACTION

Cleanup action



ACTION

Optimize lock operations



ACTION

Upgrade pumping station capacity



ACTION

flushing the city canals



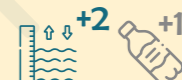
ACTION

Create green roofs for water buffering



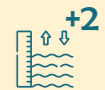
ACTION

Build emergency water storage basins



ACTION

Maintain water level



(Zet gemaal open, plastic stroom door naar volgende vak)

ACTION

SUP cleanup



ACTION

Free trash bag giveaway campaign



ACTION

Big city festival by the water



ACTION

Remove plastic from reeds



ACTION

Stricter discharge monitoring



ACTION

Intensive water purification



ACTION

Washing machine filters now remove micro plastic



ACTION

Create recreational wetlands



ACTION

Improve sewage overflow management



ACTION

Improve waterway signage and signals



ACTION

Ban on single-use plastic



ACTION

Dredging of channels



ACTION

Issue more boating permits



ACTION

Cut reeds



ACTION

Restore eco-friendly riverbanks



ACTION

Remove obstacles from waterways



ACTION

BBQ spots along the water



ACTION

Plant aquatic vegetation



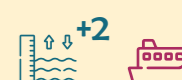
ACTION

Install water level sensors



ACTION

Speed limit on waterway



RESEARCH



Survey local residents



RESEARCH



Microplastic measurement launched



RESEARCH



Study on new fish migration pathways



RESEARCH



Local engagement campaign



RESEARCH



Install additional water quality sensors



RESEARCH



Study of sustainable dock design



One-time effect for all marinas and ports

RESEARCH



Citizen sensors deployed in pilot projects



RESEARCH



Longitudinal study of nutrient levels in rivers



RESEARCH



Study on plastic impact on flora/fauna



RESEARCH



Effectiveness Study of School Programs



Reduces plastic by -1 for every prevention card you have played.

RESEARCH



Social Media Behavior Research



Reduces plastic by -1 for every prevention card you have played.

RESEARCH



OSPAR analysis shows source of waste



RESEARCH



GIS visualizes waste movement



RESEARCH



Test with AI camera detection



RESEARCH



Study on behavior of recreationists & waste



RESEARCH



Wastewater treatment plant improvements



One-time effect for all built wastewater treatment plants.

RESEARCH



Adjust waterway traffic routes



RESEARCH



Improvement of capture system



One-time effect for all catching systems

RESEARCH



Multi-stakeholder waste management pilot



RESEARCH



Pilot project on urban rainwater gardens



RESEARCH



Study of urban rainwater retention performance



RESEARCH



Prevention Campaign Impact Study



Reduces plastic by -1 for every prevention card you have played.

RESEARCH



Pilot of smart litter collection systems



RESEARCH



Insight into plastic at overflows



RESEARCH



Feasibility study for canal widening



RESEARCH



Residential area improvements



One-time effect for all built residential areas

RESEARCH



Study on plastic hotspots



RESEARCH



Feasibility study for automated river cleaning



RESEARCH



Emergency plastic removal operation



RESEARCH



Analysis of plastic flows



RESEARCH



GPS study of waste movement



RESEARCH



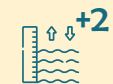
Study on plastic impact on flora/fauna



RESEARCH



Urban water storage



- PREVENTION**
Launch school awareness campaign
- PREVENTION**
Engage influencers to promote anti-littering
- PREVENTION**
No cigarette butts on the street campaign
- PREVENTION**
Develop company waste reduction agreements
- PREVENTION**
Local ban on single-use plastic straws
- PREVENTION**
Install anti-litter signage at hotspots
- PREVENTION**
Introduce deposit scheme for coffee cups
- PREVENTION**
Impose plastic reduction requirements for festivals
- PREVENTION**
Initiate street sweeper pilot program
- PREVENTION**
Launch proactive street cleaning program
- PREVENTION**
Distribute reusable shopping bags in neighborhoods

- PREVENTION**
Install street drain filters
- PREVENTION**
Include waste reduction clauses in construction contracts
- PREVENTION**
Remove broken public bins
- PREVENTION**
Provide reusable water bottles at schools
- PREVENTION**
Install microplastic filters in washing machines
- PREVENTION**
Require closed containers at construction sites
- PREVENTION**
Encourage zero-waste community events
- PREVENTION**
Enable community litter reporting
- PREVENTION**
Public challenge to reduce plastic packaging
- PREVENTION**
Replace plastic confetti with eco alternatives

- PREVENTION**
Ban single-use plastics at events
- PREVENTION**
Promote plastic-free terraces
- PREVENTION**
Provide company training on wastewater management
- PREVENTION**
Mandatory recycling stations at marinas
- PREVENTION**
Launch plastic-free shopping campaign
- PREVENTION**
Add more public waste bins
- PREVENTION**
Promote refill stations for household cleaning products
- PREVENTION**
Deposit system for plastic bottles
- PREVENTION**
Introduce local packaging-free grocery days
- PREVENTION**
Launch plastic-free school lunch programs

GAME PLAY

PAYOUT → PLASTIC ENTERS THE WATER → SCENARIO



← INVESTMENT

↓ DRAW A CARD

→ PLAY A CARD

REMOVE PLASTIC → MOVE PLASTICS